

AIRCRAFT WARNING LIGHTS

LOW INTENSITY OBSTRUCTION LIGHT LIOL - A / LIOL - B



AWL - LIOL



AIRCRAFT WARNING LIGHTS

LIOL - A / LIOL - B

KEY FEATURES

- Based on LED technology
- RED steady burning light
- >10 cd LIOL - A
- >32 cd LIOL - B
- Long life time >10+ years life expectancy
- Low consumption
- Stabilised light output
- Lightweight and compact
- Low wind load factor
- Easy to install
- No RF-radiations
- Patented beacon
(Germany 20 2011 107 787.3;
France 1160162)

OPTICAL FEATURES

- Cd emission +6° and +10°
- Horizontal beam radiation 360°
- Vertical beam spread >10°
- Optical reflector

OPTIONS

- Twin version: two galvanically separate circuits in the same fixture
- Fault alarm
- Infrared available
- Beacon support bracket
- Automatic changeover from normal to backup light

ELECTRICAL FEATURES

- Power Supply AC or DC
- Power consumption LIOL-B: 4W (for DC)
- LED feeded at constant current

MECHANICAL FEATURES

- Anodised aluminium body with heat-sink pins on the bottom
- Polycarbonate UV Resistant Dome
- Silicon gasket
- Degree of protection: IP66
- Operating temperature: -20°C to +50°C
- Storage temperature: -20°C to +50°C
- Lamp unit weight: 1kg

APPLY TO

- Airport - Stack - High Building - Chimney - Tower crane
- Pipe line - Bridge - Radio and television tower
- Transmission line - Wind turbine - Wind mast measurement
- Radar - Antenna

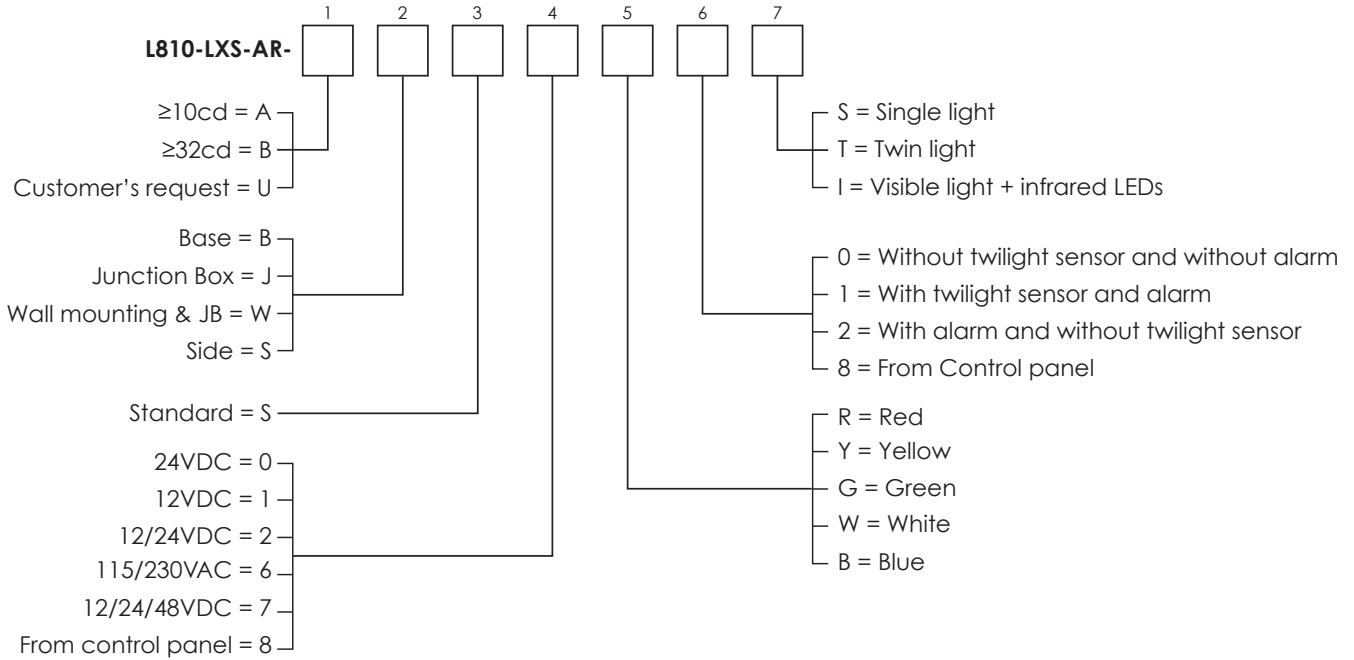
INTERNATIONAL REGULATION

- ICAO Aerodromes -Annex 14 Volume 1, 6th Edition, July 2013 Chapter 6: Low intensity, Type A-B steady burning obstacle light
- FAA AC150/5345-43F E.B. #67
Lamp type L-810
- DGAC/STAC approval nr. 2013A048
- ENAC approval nr. 0135182/ENAC/CIA
- CE marking

AIRCRAFT WARNING LIGHTS

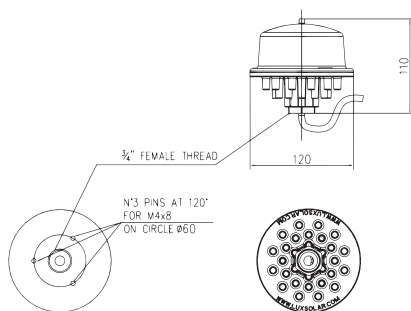
LIOL - A / LIOL - B

Order code

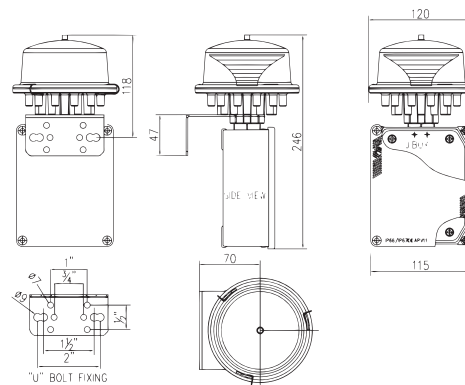


Order Code 2

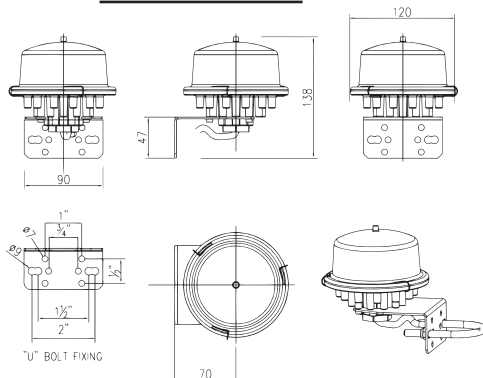
B = Base



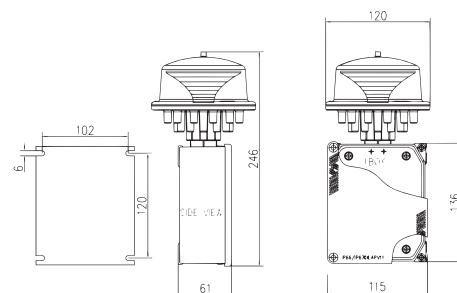
W = Wall Mounting and JB



S = Side Mounting



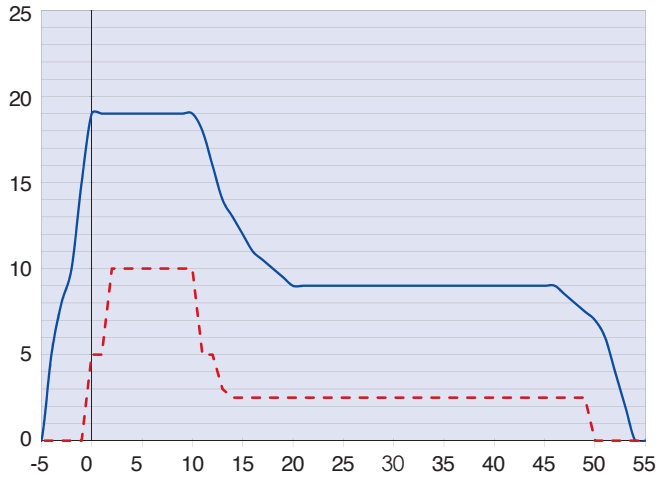
J = Junction Box



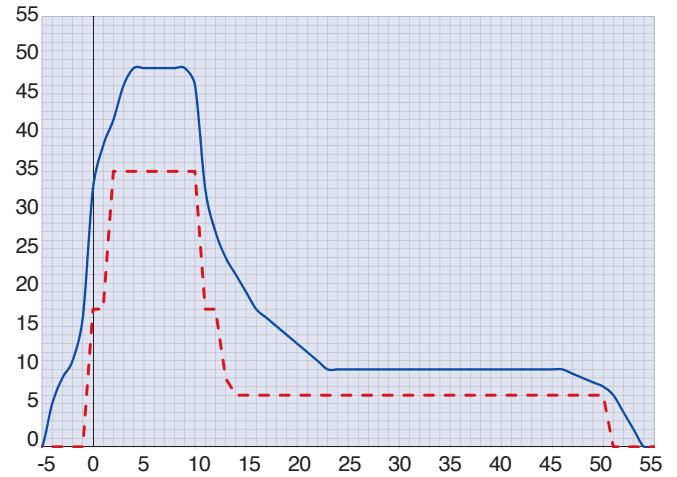
AWL - LIOL

AIRCRAFT WARNING LIGHTS

LIOL - A / LIOL - B



— L810-LXS-A average emission level
 - - ICAO ANNEX 14 low intensity type A
 Minimum Required Intensity



— L810-LXS-B average emission level
 - - ICAO ANNEX 14 low intensity type B
 Minimum Required Intensity

AWL - LIOL

CERTIFICATIONS



FEATURES



TYPICAL APPLICATION

